



by ARCHPOT

Installation and Operation Guide

WARNING! THIS APPLIANCE IS FOR OUTDOOR USE ONLY!

This manual should remain with the homeowner or parties responsible for operation.

WARNING!!

IF THESE INSTRUCTIONS ARE NOT FOLLOWED EXACTLY, A FIRE OR EXPLOSION MAY RESULT, CAUSING PROPERTY DAMAGE, PERSONAL INJURY, OR DEATH.


FOR YOUR SAFETY:


This product must be installed and serviced by a contractor or qualified equipment installer who is licensed or certified by the jurisdiction in which the product will be installed where such state or local requirements exist. In the event no such state or local requirement exists, the installer or maintainer must be a professional with sufficient experience in pool equipment installation and maintenance so that all of the instructions in this manual can be followed exactly. Before installing this product, read and follow all warning notices and instructions that accompany this product. Failure to follow warning notices and instructions may result in property damage, personal injury, or death. Improper installation and/or operation can create carbon monoxide gas and flue gases which can cause serious injury, property damage, or death. For installations in the vicinity of occupied/living spaces, as an additional measure of safety, ARCHPOT strongly recommends installation of suitable carbon monoxide detectors in the vicinity of this appliance and in any adjacent occupied spaces. Improper installation and/or operation may void the warranty.


DO NOT DISCARD THESE INSTRUCTIONS


CALIFORNIA PROPOSITION 65

This product can expose you to Chromium, which is known in the state of California to cause cancer, birth defects or other reproductive harm.
(for more information, go to: www.p65warnings.ca.gov)

 **WARNING:** IMPROPER INSTALLATION, ADJUSTMENTS, ALTERATIONS, SERVICE OR MAINTENANCE MAY CAUSE SERIOUS INJURY OR PROPERTY DAMAGE. PLEASE READ THOROUGHLY AND UNDERSTAND ALL THE CONTENTS OF THIS DOCUMENT BEFORE INSTALLING OR SERVICING THIS EQUIPMENT. FOLLOW ALL THE INSTRUCTIONS TO INSURE PROPER SAFETY, APPLICATION AND OPERATION OF THE PRODUCT.

 **WARNING:** DO NOT STORE OR USE GASOLINE OR OTHER FLAMMABLE VAPORS AND OR LIQUIDS IN THE VICINITY OF THIS OR OTHER APPLIANCES.

 **WARNING:** THIS APPLIANCE IS ONLY FOR USE WITH NATURAL GAS OR PROPANE GAS ONLY. AT NO TIME ARE SOLID FUELS TO BE USED WITH THIS APPLIANCE.

 **DANGER!** THIS APPLIANCE CAN PRODUCE CARBON MONOXIDE WHICH HAS NO ODER. USING THIS APPLIANCE IN AN ENCLOSED SPACE CAN KILL YOU. NEVER USE THIS APPLIANCE IN AN ENCLOSED SPACE, MOTORHOME/CAMPER, CAR OR HOME.

Do not store or use gasoline or other flammable vapors and liquids in the vicinity of this or any other appliance.

WHAT TO DO IF YOU SMELL GAS

- Immediately switch off main gas supply.
- Do not try to light any appliance.
- Do not touch any electrical switch; do not use any phone in your building.
- Immediately call your gas supplier from a neighbor's phone. Follow the gas supplier's instructions.
- If you cannot reach your gas supplier, call the fire department.

Installation and service must be performed by a qualified installer, service agency or the gas supplier.

WARNING

- The appliance/system may produce carbon monoxide which has no odor. Using this appliance/system in an enclosed space such as a motor home, camper, car or home may result in death.
- ARCHPOT utilizes CSA certified components. Installation must conform to local codes, National Fuel Gas Code ANSI Z223.1/NFPA and/or National Fuel Gas Code
- Appliance should be serviced annually by a professional gas technician certified in the United States by the National Fireplace Institute (NFI). Any parts that require replacement should be replaced only by a certified service professional using parts recommended by manufacturer.
- Do not alter any component or design of this unit as it may alter the operation.
- Fire feature is not intended for cooking. Do not place anything on or in fire feature.
- Never use fire feature in windy conditions.
- Do not reach across or touch hot surfaces or open flames.
- Do not ignite fire feature when media (rocks/glass) is wet. Doing so may cause media to crack and burst.
- It is important to inspect the fire feature before every use. Make sure there are no obstructions or combustible materials on or near unit.
- Wipe down fire feature surface before every use and immediately clean any spills or messes on or around it.
- Consistently check hoses and fittings for cracks, abrasions and leaks (at least once a month).
- Always keep children and animals away from fire feature.
- Use a designated fire pit or barbecue cover when not in use.

TABLE OF CONTENTS

Section 1: IMPORTANT SAFETY INSTRUCTIONS

Section 2: GENERAL DESCRIPTION

- 2.1 System Overview
- 2.2 ARCH Fire Control System
- 2.3 Features - Manual Operated System
- 2.4 Features - ARCH Fire Control System
- 2.5 Gas and Electric Requirements
 - 2.5.1 Natural Gas
 - 2.5.2 Liquid Propane
 - 2.5.3 Piping Charts

Section 3: INSTALLATION DETAILS

- 3.1 Installation Requirements
- 3.2 Initial Set Up - Manual Operated System
- 3.3 Initial Set Up - ARCH Fire Control System
- 3.4 Initial Set Up - Continued
- 3.5 Installation Diagrams
- 3.6 Installation - Manual Operated System
- 3.7 Installation - ARCH Fire Control System

Section 4: OPERATION

- 4.1 Media
- 4.2 Operation - Manual Operated System
- 4.3 Operation - ARCH Fire Control System
- 4.4 Maintenance

Section 5: TROUBLE SHOOTING

Section 6: WARRANTY / CONTACT INFO

SAVE THESE INSTRUCTIONS - DO NOT DISCARD

Section 1: IMPORTANT SAFETY INSTRUCTIONS

Important Safety Instructions pertain to a risk of fire, electrical shock or injury to persons or animals in the vicinity of this product. Read and follow all instructions. When installing and using this electrical equipment, basic safety precautions should always be followed, including the following:

DANGER

RISK OF ELECTRICAL SHOCK OR ELECTROCUTION. This product must be installed by a licensed or certified electrician in accordance with the National Electrical Code® and applicable local codes and ordinances. In Canada, the Canadian Electrical Code and all applicable local codes and ordinances must be adhered to. Improper installation will create an electrical hazard, which could result in death or serious injury to users, installers, or others due to electrical shock, and may also cause damage to property. Read and follow the specific instructions below.

WARNING

Before installing this product, read and follow all warning notices and instructions accompanying this product. Failure to follow safety warnings and instructions can result in severe injury, death, or property damage. For additional free copies of these instructions, call ARCHPOT Support at 714-895-3359 (USA)

ATTENTION INSTALLER

This manual contains important information about the installation, operation and safe use of this product. This information should be given to the owner/operator of this equipment.

WARNING: RISK OF ELECTRICAL SHOCK OR ELECTROCUTION!

Improper use or installation could result in serious injury or death. This product is only available for 12-volt AC power. For supply connections, use only an isolating low voltage power supply with ungrounded output, evaluated and listed by a Nationally Recognized Testing Laboratory (NRTL).

THIS APPLIANCE, WHEN INSTALLED, MUST BE ELECTRICALLY GROUNDED IN ACCORDANCE WITH LOCAL CODES OR, IN THE ABSENCE OF LOCAL CODES, WITH THE NATIONAL ELECTRICAL CODE, ANSI/NFPA 70, IF APPLICABLE.

Section 2: GENERAL DESCRIPTION

2.1 System Overview

This manual provides instructions for installing, operating and replacing this product.

2.2 ARCH Fire Control System



2.3 Features - Manual Operated System

- Ease of operation, ignite with key valve and BBQ lighter
- High quality burner and support plates
- Vessels made of durable GFRC with unique concrete finishes.
- Design and manufactured in The USA.

2.4 Features - ARCH Fire Control System

- Electronic Ignition for fast & convenient fire feature lighting
- Electronic flame sensing for instant flame safety & monitoring
- All components used within this appliance are and assembled to comply with ANSI Z21-97 (2017)
- Operates on 12 Volts AC and complies with NEC 2014 Article 680. Can be installed within 5 feet of pool water
- Operates with a Hot Surface Ignition System with robust construction and reliable ignition source
- Potted electronics for moisture resistance and reliable operation
- Pilot burner wires are made of hi temperature material to withstand temperatures up to 450 degrees Centigrade
- Operating temperatures between -20 F to 185 F
- Weatherproof stainless steel construction with waterproof connectors

2.5 Gas & Electric Requirements

INPUT VOLTAGE: 120 VAC/60 HZ to transformer (provided by ARCHPOT)
OUTPUT VOLTAGE: (output from transformer to appliance) 12 VAC/60 HZ , 5000 mA min

2.5.1 - Natural Gas

Ensure that the service supplying the fire feature is fitted with a positioned shut off valve that is easily accessible.

Requirements: Always check the rating plate to make sure the gas supply you are connecting is the gas type for the manufactured fire feature. The installation of this appliance must conform with local codes, or in the absence of local codes, to the National Fuel Gas Code, ANSI Z223.1, NFPA 54; National Fuel Gas Code; Natural Gas and Propane Installation Code, CSA 8149.1; or Propane Storage and Handling Code, CSA 8146.2 as applicable. Natural gas connection must be performed by a licensed contractor or local gas company representative.

Natural Gas Supply Pressure

MINIMUM:	6.3" W.C.	<i>Fire Feature requires solid mounting surface and vent holes must remain unobstructed.</i>
NORMAL:	7.0" W.C.	
MAXIMUM:	7.7" W.C.	

Pressure Testing: If the fire feature is installed with a fixed fuel piping system and equipped with an appliance gas pressure regulator, the fire feature and its individual shut-off valve must be disconnected from the gas supply piping system during any pressure testing of the system at test pressure in excess of 1/2 psi (3.5 kPa).

The fire feature must be isolated from the gas supply system by closing its individual manual shut off valve during any pressure testing of the of the gas supply piping system at test pressures equal to or less than 1/2 psi (3.5 kPa) performed by a licensed contractor or local gas company representative.

2.5.2 - Liquid Propane (Plumbed In)

Ensure that the service supplying the fire feature is fitted with a positioned shut off valve that is easily accessible.

Requirements: Always check the rating plate to make sure the gas supply you are connecting is the gas type for the manufactured fire feature. The installation of this appliance must conform with local codes, or in the absence of local codes, to the National Fuel Gas Code, ANSI Z223.1, NFPA 54; National Fuel Gas Code; Natural Gas and Propane Installation Code, CSA 8149.1; or Propane Storage and Handling Code, CSA 8146.2 as applicable. Natural gas connection must be performed by a licensed contractor or local gas company representative.

Manifold Pressure: For Plumbed In Propane Gas installation, use a regulator.

Liquid Propane Supply Pressure

MINIMUM: 9.9" W.C.
 NORMAL: 11.0" W.C.
 MAXIMUM: 12.1" W.C.

*Fire Feature requires solid mounting surface
 and vent holes must remain unobstructed.*

Pressure Testing: If the fire feature is installed with a fixed fuel piping system and equipped with an appliance gas pressure regulator, the fire feature and its individual shut-off valve must be disconnected from the gas supply piping system during any pressure testing of the system at test pressure in excess of 1/2 psi (3.5 kPa).

The fire feature must be isolated from the gas supply system by closing its individual manual shut off valve during any pressure testing of the of the gas supply piping system at test pressures equal to or less than 1/2 psi (3.5 kPa) performed by a licensed contractor or local gas company representative.

Note: Check with your gas supplier to verify gas flows and pressures available at the location of your installation. In many cases utility companies will install larger meters at no charge to accommodate larger flows.

2.5.3 - Piping Sizing Charts

	SIZE OF PIPE (IN.)											
	1/2"		3/4"		1"		1-1/4"		1-1/2"		2"	
	NG	LP	NG	LP	NG	LP	NG	LP	NG	LP	NG	LP
1 BOWL	10' [3.1 m]	80' [24.4 m]	50' [15.2 m]	300' [91.4 m]	175' [53.3 m]	450' [137.2 m]	400' [121.9 m]	-	-	-	-	-
2 BOWLS	-	20' [6.1 m]	10' [3.1 m]	80' [24.4 m]	40' [12.2 m]	250' [76.2 m]	200' [61 m]	-	400' [121.9 m]	-	-	-
3 BOWLS	-	10' [3.1 m]	-	30' [9.1 m]	20' [6.1 m]	125' [38.1 m]	70' [21.3 m]	450' [137.2 m]	200' [61 m]	-	450' [137.2 m]	-
4 BOWLS	-	-	-	20' [6.1 m]	10' [3.1 m]	60' [18.3 m]	50' [15.2 m]	250' [76.2 m]	125' [38.1 m]	500' [152.4 m]	400' [121.9 m]	-
5 BOWLS	-	-	-	10' [3.1 m]	-	40' [12.2 m]	30' [9.1 m]	150' [45.7 m]	70' [21.3 m]	400' [121.9 m]	200' [61 m]	-
6 BOWLS	-	-	-	10' [3.1 m]	-	30' [9.1 m]	20' [6.1 m]	125' [38.1 m]	50' [15.2 m]	250' [76.2 m]	175' [53.3 m]	-

NG = Natural Gas
 LP = Liquid Propane

Installation must conform with local codes or, in the absence of local codes, with the National Fuel Gas Code, ANSI Z223.1 / NFPA 54, or International Fuel Gas Code. The appliance, when installed, must be electrically grounded in accordance with local codes or, in the absence of local codes, with the National Electric Code, ANSI/NFPA 70, if applicable.

PIPE SIZING CHARTS

The sizing charts below list the specific pipe sizes required for the amount of BTUs for new gas line installations. If you are using an existing gas line you must consider existing gas line capacities to ensure proper pressure. Consult a qualified service professional or gas supplier for more details.

Natural Gas (NG) Pipe Sizing

LENGTH OF PIPE (FT.)	SIZE OF PIPE (IN.)								
	1/2"	3/4"	1"	1-1/4"	1-1/2"	2"	2-1/2"	3"	4"
10'	108	230	387	793	1237	2259	3640	6434	-
20'	75	160	280	569	877	1610	2613	5236	9521
30'	61	129	224	471	719	1335	2165	4107	7859
40'	52	110	196	401	635	1143	1867	3258	6795
50'	46	98	177	364	560	1041	1680	2936	6142
60'	42	89	159	336	513	957	1559	2684	5647
70'	38	82	149	317	476	896	1447	2492	5250
80'	36	76	140	239	443	840	1353	2315	4900
90'	33	71	133	275	420	793	1288	2203	4667
100'	32	68	126	266	411	775	1246	2128	4518
125'	28	60	117	243	369	700	1143	1904	4065
150'	25	54	105	215	327	625	1008	1689	3645
175'	23	50	93	196	303	583	993	1554	3370
200'	22	47	84	182	280	541	877	1437	3160
300'	17	37	70	145	224	439	686	1139	2539

- Natural Gas flow shown in thousands of BTU. One cubic foot of natural gas = 1000 BTU.
- Nominal pressure at the burner is 3.5 inches of water column (Typical machine supply 5 to 7 inches).
- Pipe length must include additional length for all fittings. Add approximately 5 ft [1.5 m] of pipe per fitting.
- **Example:** A burner that requires 440,000 BTU would need 20 ft [6.1 m] of 1-1/4 inch pipe.

Liquid Propane (LP) Gas Pipe Sizing

LENGTH OF PIPE (FT.)	SIZE OF PIPE (IN.)								
	1/2"	3/4"	1"	1-1/4"	1-1/2"	2"	2-1/2"	3"	4"
10'	275	567	1071	2205	3307	6221	10140	17990	35710
20'	189	393	732	1496	2299	4331	7046	12510	25520
30'	152	315	590	1212	1858	3465	5695	10110	20620
40'	129	267	504	1039	1559	2992	4778	8481	17300
50'	114	237	448	913	1417	2646	4343	7708	15730
60'	103	217	409	834	1275	2394	3908	6936	14150
80'	89	185	346	724	1086	2047	3329	5908	12050
100'	78	162	307	630	976	1811	2991	5309	10830
125'	69	146	275	567	866	1606	2654	4711	9613
150'	63	132	252	511	787	1496	2412	4281	8736
200'	54	112	209	439	665	1282	2083	3618	7382
250'	48	100	185	390	590	1138	1808	3210	6549
300'	43	90	168	353	534	1030	1637	2905	5927
350'	40	83	155	325	491	947	1505	2671	5450
400'	37	77	144	303	458	887	1404	2492	5084

- Liquid Propane (LP) gas flow shown in thousands of BTU. One cubic foot of propane gas = 2516 BTU.
- This chart refers to low pressure LP, after regulation. Standard nominal pressure at the burner is 11 inches of water column.
- Pipe length must include additional length for all fittings. Add approximately 5 ft [1.5 m] of pipe per fitting.
- **Example:** A burner that requires 440,000 BTU would need 20 ft [6.1 m] of 1-inch pipe.

Section 3: INSTALLATION DETAILS

3.1 Installation Requirement

- The mounting area should be prepared for electrical, gas and water (where applicable).
- The electrical, gas and water outlets or “stub outs” should be located within the center area of the base of the product.
- This product must be properly anchored to a solid mounting surface.
- The mounting surface should be level in all directions (axis X, Y & Z).
- All products must be located or fitted in an area with good drainage.
- All products must be vented. Make sure all openings at base or at burner area are left unobstructed.
- See overview of electrical wiring and piping (See diagram 3).
- See Product Dimension (Section 2.2)

3.2 Initial Set-up - Manual Operated System

- The fire feature requires gas piping
- Make sure gas is turned off before installing pipes
- Install gas piping shown in Diagram 2
- Internal gas lines must be clean and free from any dirt, debris, or contamination.

3.3 Initial Set-up - ARCH Fire Control System

- The fire feature will require both gas and electrical power.
- Make sure gas and electric is turned off before installing pipes and wires.
- Install the control panel and gas piping as shown in the Diagram 3.
- Internal gas lines must be clean and free from any dirt, debris, or contamination.
- Install wiring (Min.14 gauge) underground between the control panel and the burner assembly. DO NOT USE BELL OR SPRINKLER WIRE. Lower gage wire is not capable of carrying the current needed to operate the appliance (See Diagram 3). The appliance should be wired to a switch or dry contact on the 120 VAC side of the transformer.
- Separate run required for all features - Do Not Daisey Chain

Note: A light switch, emergency switch, relay contact, or mechanical timer should always be installed on the 120 VAC side of the transformer to operate the fire feature. 12 VAC side may be wired as far as 50 feet away from the transformer using 14 gauge wire.

WARNING - THIS PRODUCT OPERATES WITH 12 AC INPUT. DO NOT ATTEMPT TO CONNECT 120 VAC DIRECTLY TO THE APPLIANCE FOR IT WILL PERMANENTLY DAMAGE IT.

Note: The gas and electrical connection should be located at or near the center of each fire bowl / fire pit. For the electrical, you will need 2 wires and a ground to the appliance.

3.4 Initial Set-up - Continued

- The gas piping and (electrical for electronic system) conduit must be installed underground between the control panel/gas meter and the fire feature. Please consult with gas professional for proper gas pipe and fitting sizing. Using smaller piping over long lengths will result in a diminished flame due to pressure drop/piping resistance.
- Maintain good piping practice by keeping pipe length and elbows to a minimum to eliminate unnecessary pressure drops.

IMPORTANT: *Corrugated flex gas lines should not be used underground as permanent piping. Rigid pipe should always be used for permanent installation.*

3.4 Initial Set-up - Continued

- The gas piping must be reduced to 3/4" pipe at the fire feature with a means to shut off the gas supply from the gas meter.
- Install a 3/4" to 1/2" reducer at the fire feature "stub-out" riser. The gas and electric risers should not be more than 3" to 4" above the installation surface.
- Install the 1/2" flare to 1/2" NPT fitting into the reducer fitting/pipe. You may place a manual shut off valve between the elbow and the reducer for future maintenance. Test gas piping for leaks
- Make sure the mounting surface is level before installing the fire feature into position.
- Place the fire feature into position. Make sure piping is centered properly
- Anchor the fire feature such that it is secured and does not move.
- Make sure the fire feature has a way to drain water. Providing good drainage is critical. If you are installing a fire bowl and it is paced on a column, make sure the bowl is anchored properly and the electrical and gas pipe hole is sealed such that water cannot penetrate the coping surface under the bowl and will flow freely away and out to the edges.

RECOMMENDED CLEARANCES TO COMBUSTIBLE SURFACES

SIDES: 4 FT

TOP: 8 FT

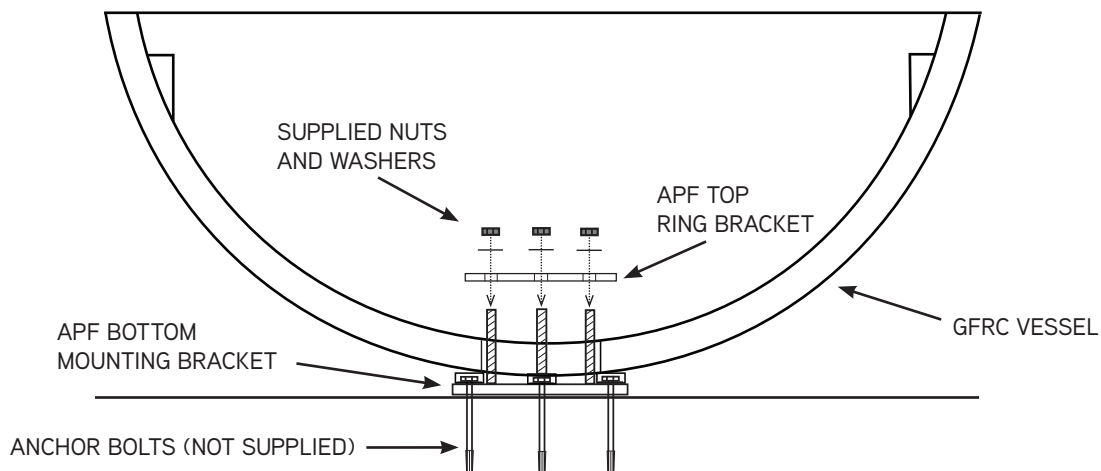
3.5 Installation Diagrams

All gas set-up and installation should be done by a licensed gas professional.

All electrical/wiring set-up and installation should be done by a licensed electrician/contractor.

- Install the Fire Feature as shown in following Diagrams
- 24"- 60" Geo Round (excluding 31" model), 24"- 48" Legacy Round, 24"- 36" Geo Square and 30"- 36" Legacy Square requires installation of the APF Mounting Bracket to secure the vessel and allow for ventilation and drainage. Install the mounting bracket as shown in Diagram 1. Using appropriate anchor bolts, (not supplied), secure the APF bottom bracket to a suitable, stable permanent surface. Place the GFRC vessel over the bottom bracket so the all thread is accessible from top of vessel. Attach the APF top ring bracket using the supplied bolts. Do not seal open space between mounting bracket and vessel. Warranty is voided if the mounting bracket is not installed on required models.

Diagram 1 - BOWL MOUNTING INFORMATION



NOTE: Drainage **MUST** be provided in the bottom of each bowl.

Diagram 2 - MANUAL SYSTEM GAS PIPING DIAGRAM

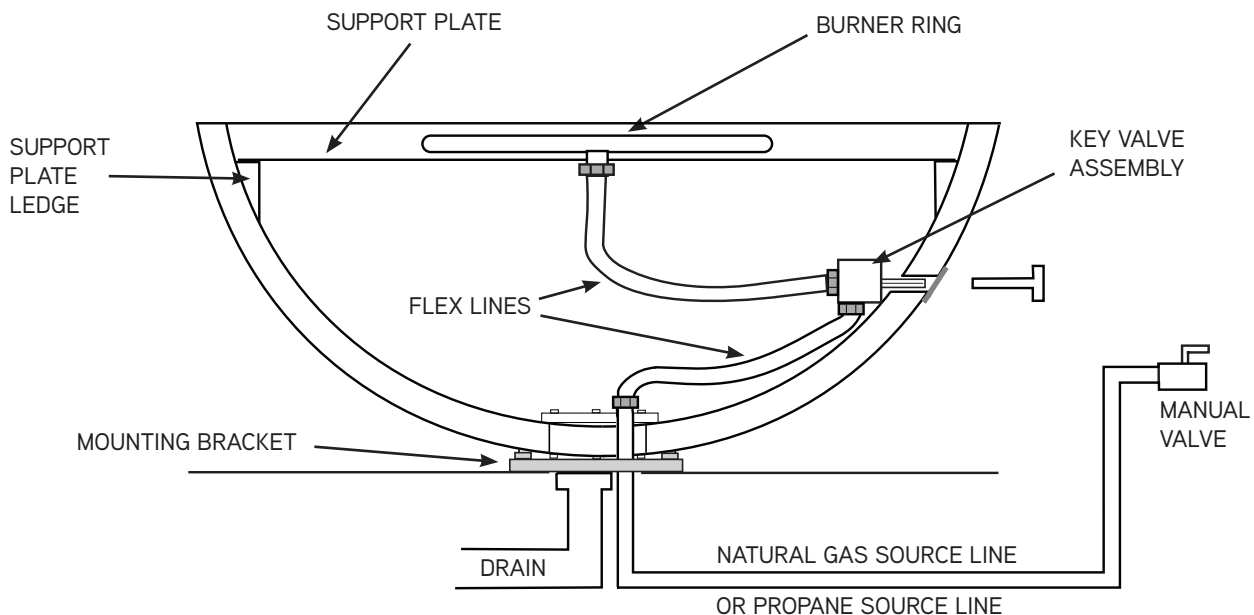
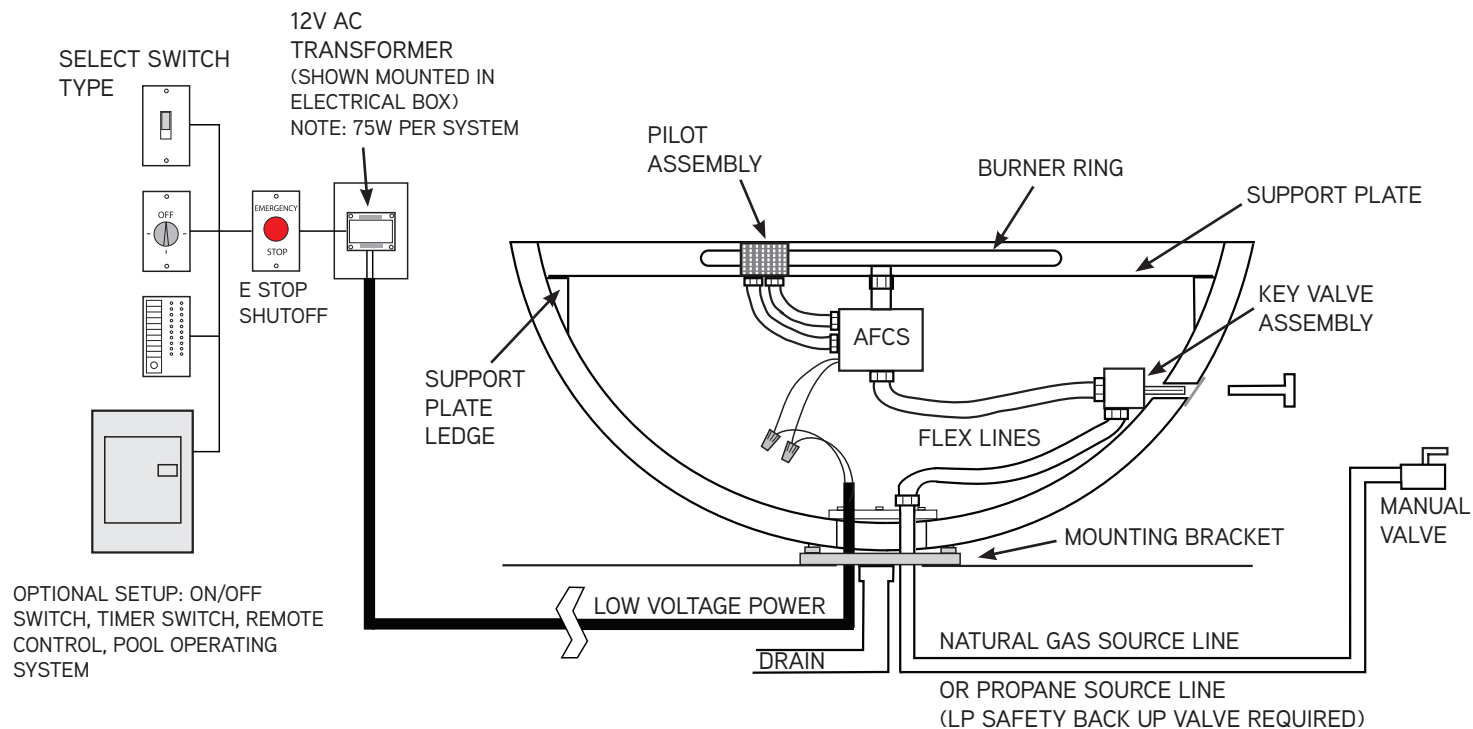


Diagram 3 - AFCS SYSTEM GAS PIPING AND ELECTRICAL DIAGRAM



Emergency Stop must be mounted minimum of 6 ft. from feature. Do Not Mount Switch to Fire Feature.
Utility Post available, contact ARCHPOT

3.6 Installation - Manual Operated System

INSTALLATION SHOULD BE DONE BY A QUALIFIED GAS SERVICE PROFESSIONAL

Installing the burner

- The fire feature will come fitted with a burner insert, key valve assembly, 2 whistle free flex lines and mounted bracket when required.
- The burner will need to be connected to the gas supply lines. Make sure you have the correct Burner System to match the type gas you will be connecting. You must use the proper burner system for natural gas or liquid propane gas.
- Lift the burner and pan from the fire bowl or fire pit. Take the 1/2" whistle free flex hoses (2 provided) and tighten the flare fittings from the Supply line to the Key Valve with one of the flex lines. Then connect the key valve to the burner using the additional supplied flex line. Use a wrench and tighten the hoses to the flare fittings to insure they are tight and do not leak gas. If this fitting is not tightened correctly it will leak and potentially ignite and can be hazardous. Do not kink or make a tight radius bend on the gas hose as it may restrict the flow of gas.

Note: Do Not Use Pipe Sealer on Flare Fittings

- You may now turn on the gas to the unit. Make sure there are no leaks at the gas fitting.
- You can now lower the burner and pan onto the bowl or fire pit. The pan will sit on the inner ledge of the fire bowl or fire pit.

*Additional manual valve must be installed within 6 ft of Fire Feature
For both Manual Operated System or ARCH Fire Control System*

3.7 Installation - ARCH Fire Control System

INSTALLATION SHOULD BE DONE BY A QUALIFIED GAS SERVICE PROFESSIONAL

Installing the burner and control

- The fire feature will come fitted with a burner, igniter and control box. The burner and control will need to be connected to the gas and electrical lines supply lines. Make sure you have the correct Burner System to match the type gas you will be connecting. You must use the proper burner system for natural gas or liquid propane gas.
- Lift the burner and pan from the fire bowl or fire pit. Take the 1/2" whistle free flex hoses (2 provided) and tighten the flare fittings from the Supply line to the Key Valve with one of the flex hoses. Then connect the Key Valve to the input the control box using the additional supplied flex hose. Use a wrench and tighten the hoses to the flare fittings to insure they are tight and do not leak gas. If this fitting is not tightened correctly it will leak and potentially ignite and can be hazardous. Do not kink or make a tight radius bend on the gas hose as it may restrict the flow of gas.

Note: Do Not Use Pipe Sealer on Flare Fittings

- Connect the 12 VAC wires (min. 14 gauge wire) from the control box, to the 12 VAC electrical wires coming out of the conduit (Note: these wires are coming from the supply voltage transformer). Use wire nuts to connect each wire to the control in the fire feature. Connect the copper ground wire to the ground/bonding lug on the side of the control box.
- You may now turn on the gas to the unit. Make sure there are no leaks at the gas fitting.
- You can now lower the burner and pan onto the bowl or fire pit. The pan will sit on the inner ledge of the fire bowl or fire pit.

Section 4: PRODUCT SETUP & OPERATION

4.1 Media

- Place fire glass or fire media onto the burner plate. Do not over fill the support plate area.
- Cover the burner such that it cannot be seen.
- Leave the pilot hood open and do not cover as it needs air to operate properly.
- Spread the fire media evenly over the burner.
- Turn the system on and make sure it lights and the flames come through the fire media.
- Spread the fire media such that the flames are not restricted and will ignite easily.
- If you need to move or reposition the fire media, please turn off the ignition system and wait for the media to cool.

 **Do Not use Fire Feature when Media is wet as glass and rock may explode**

4.2 Operation - Manual Operated System

- Make sure main Gas source line is open and area is clear/safe to ignite.
- Open the manual gas key valve.
- Ignite with BBQ lighter.
- Remove hand and step back from flame.
- If system does Not Ignite within (5 seconds), close key valve.
- Wait 30 seconds attempt to ignite again
- If system does Not Ignite within (5 seconds), close key valve and consult your contractor or ARCHPOT for assistance.

4.3 Operation - ARCH Fire Control System

PLEASE NOTE: THIS SYSTEM REQUIRES BOTH GAS AND ELECTRIC TO BE INSTALLED FOR PROPER OPERATION. MAKE SURE AN ELECTRIC SWITCH IS INSTALLED TO TURN THE SYSTEM ON AND OFF.

- Make sure to open the manual gas valve and area is clear/safe to ignite.
- Turn on the power switch to the unit.
- After 3 seconds, the igniter will begin to glow red.
- Shortly after this (5 seconds), the pilot burner will then ignite.
- The igniter will stay lit for 6 to 8 seconds to prove there is a flame and then ignite the main burner.
- The igniter will then go off and the flame will continue as long as the flame is present and can be sensed by the flame sensor.
- If does Not Ignite within (5 seconds), close key valve and consult TROUBLESHOOTING contractor or ARCHPOT for assistance.

Note: *Wind gusts may displace the flame away from the flame sensor such that the system will shut down for 7 seconds and then re-start the firing sequence. This system will try 3 times to light the system. If it fails to ignite after 3 trials, it will lock out (shut down) and will need to be reset by turning the power off and the on again.*

- *Do Not operate in rainy and high wind conditions as the flame will not operate optimally.*
- *Always turn off your system once it is finished being used. Never leave the fire feature unattended when in use.*
- *Never cover the fire feature until it has cooled down.*
- *It is recommended to cover your fire feature if it is going to be out of use for long periods of time.*

Note: *If this is the first time you are turning on the system, there will be air in the gas lines and will need to be purged. This will require the system to be activated and cycled several times until all the air is removed for the gas lines. This means the system will require resetting several times until it ignites properly.*

Section 4.4 Maintenance

- *It is recommended to frequently check your fire feature from foreign objects within the fire area. It is not recommended for use with wood, wood chips, or other combustible fuels. If they are on the burner area, they must be removed before lighting.*
- *Make sure the burner and pilot are clear from any foreign objects such as dead insects, spider webs, or other objects that may cause ignition problems.*
- *Always make sure all fittings are tightened.*
- *The pilot area may be vacuumed to remove debris or excess soot. After cleaning turn on the unit to make sure it ignites properly.*

Section 5: TROUBLE SHOOTING - ARCH Fire Control System

If you are experiencing trouble with your fire feature, contact your installation professional to check the following:

1) System does not ignite

- Check that there is power. Circuit breaker may be tripped or turned off.
- Make sure transformer is delivering 12 Volts AC. and properly sized for amperage, 5 amps required
- Make sure transformer wires are not cut or broken.
- Check that gas is on at the supply and at the shut-off valve.
- Check that igniter turns red when switch is on. If not,
- Igniter may be broken and needs replacement.
- Igniter turns red but does not ignite the pilot burner.
- Orifice may be plugged and needs cleaning or replacement

2) Pilot flame ignites but main burner does not

- Control box will have to be serviced.

3) System turns on but shuts off after a few seconds

- Ground connection may be faulty. Check ground connection to pilot burner.

4) Orifice is clean but still does not get gas

- Gas supply may be plugged with water or other debris and will need to be vacuumed out to clear the supply pipe.

5) System turns on and stays on for awhile but then turns off

- System may be over heating. Check that burner plate and burner is over filled with media.
- Make sure lower vents are clear.
- System may have been shut down due to high wind pressure.

Section 6 - Warranty and Contact Information

Warranty

ARCHPOT offers a limited 1-year warranty against manufacturer defects (extended warranty available). ARCHPOT will repair or replace product which has been proven to be defective in workmanship and/or material. If unit is confirmed defective and is not repairable by a qualified ARCHPOT representative, the unit will be replaced FOB ARCHPOT facility. The buyer must provide proof of purchase along with date of delivery to the end user and arrange shipping associated with the replacement of the unit. ARCHPOT will not be responsible for any defects resulting from misuse, user error, installation error, abuse, repair or alteration. The use of wood or fuels other than those specified for use with this unit by ARCHPOT will void warranty immediately. Under no circumstances will ARCHPOT be liable for incidentals or consequential damage resulting from defective products. This warranty is ARCHPOT's sole warranty, all others expressed or implied whether of merchantability, fitness of purpose or otherwise, are therefore disclaimed by ARCHPOT. ARCHPOT is not responsible for any injury or mishap related to misuse, abuse, or lack of judgment in choosing fire display locations.

Trouble Shooting or Repair/Replacement Contact Email:

Alex@archpot.com

Tim@archpot.com

ARCHPOT

ARCHITECTURAL SITE FURNISHINGS

(714) 895-3359 • ARCHPOT.COM

508 BATEMAN CIRCLE, CORONA, CA. 92880